

Water Application Solutions

GRUNDFOS 

Blue-White
Industries, Ltd.

 **HAYWARD**



WALCHEM
IWAKI America Inc.

Honeywell

ATI
Analytical Technology



ASCO



PLAST-O-MATIC
VALVES, INC.



 **Yamada** america, inc.
Manufacturer of Air Operated Double Diaphragm Pumps



Southeastern Systems, Inc.

Phone: 770-922-5828

Fax: 770-922-5587

Email: nancy@sesystemsinc.com

www.sespumps.com

Southeastern Systems, Inc.

P.O. Box 705
Conyers, GA 30012
770-922-5828
770-922-5587 Fax



Southeastern Systems has been serving the Food and Municipal Water Industry for more than 25 years. Whether it's a pump you need, an electronic monitor, valve or a specialty PVC item, our knowledgeable staff can assist you in finding the right component for your water treatment application. The products we offer are the highest quality, designed to be easily installed, maintained and offered at competitive pricing.

Our offices are open Monday - Friday 8:00 am to 5:00 pm EST.

Contact us:

Phone - **770-922-5828**

Fax - **770-922-5587**

Email nancy@sesystemsinc.com or visit us on our Website: www.sespumps.com

We will never knowingly disappoint you. If for any reason our products and services do not meet or exceed your expectations, please call us at **770-922-5828**. We would also appreciate hearing your ideas and suggestions as well. You are important to us.

Table of Contents

	Page
Centrifugal Pumps	3
Stack Kits, O-rings, Seal Kits	6
Liquid Meterring Pumps	9
Submersible Pumps	14
Electronic Controllers / Monitors	17
Cell Modems	21
Hach ph Monitor & Parts	22
ATI & Parts	19
Valves—PRV, Actuator, Butter Fly	23
Flow Meters	25
Solenoid Valves	27
PVC Specialty Parts	29
SES Products	31
SES Insta-Chlor	31
SES tank Level Switch	32
SES Millernator	32
SES Accu-Tab Delivery Systems	33
Accu-Tab Chlorinators	35
Chart Recorder & Parts	33



Grundfos Pumps, Parts, Repair Kits

VERTICAL MULTISTAGE CENTRIFUGAL PUMPS CRI's , CRN's, CR's IN WIDE RANGE OF SIZES

Designed to cover a wide variety of applications, ranging from small domestic applications to large industrial systems.

Grundfos pumps are the Industry Standard where performance and material standards must meet specific demands. SES can assist in sizing the appropriate pump for your application. Our prices are universally competitive.

Typical Applications: Washing & Cleaning, Water Treatment, Temperature control, Pressure Boosting, Waste Water and Irrigation.

THE CM/CME ABBREVIATION DERIVES FROM THE MOST BASIC DESCRIPTION OF THE PUMP:

Centrifugal Modular

The pump is composed of a series of interchangeable modules, all of which have been designed to work together seamlessly, whatever the application.

The CM/CME pump is primarily used as a built-in pump in OEM solutions. The compactness and flexibility make it an optimal solution for installation and interaction with other components in a larger product. It can also be used as a system pump, connected in complete system solutions or even as a stand-alone pump.

Wide Temperature range

Thanks to the numerous configuration possibilities and range of materials, the Grundfos CM/CME pump can operate over a wide range of temperatures: from -30°C to 120°C . If you require different pumps for different applications, this flexibility and streamlining helps keep maintenance and spare parts costs to a minimum.



CM 1-3-G



CM 5-2-1



CM 3-8-A



CM 5-4-1



CM 10-8-G



CM 3-2-A



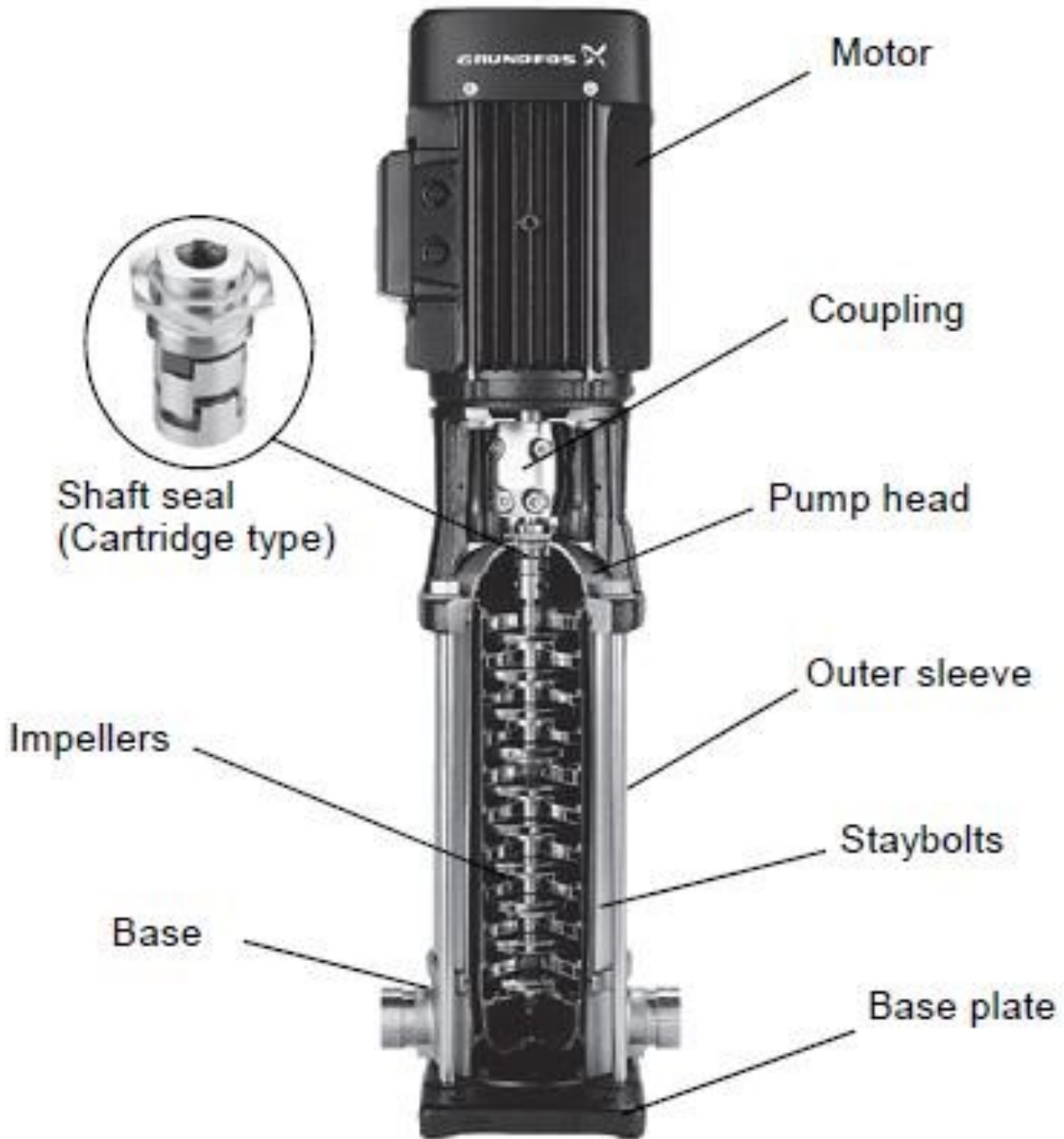
CM 3-3-1



CM 5-8-A



CM 3-2-A



Grundfos Spare Parts and Service Kits for all Pumps:

Grundfos spare parts and service kits are original high quality Grundfos components. You can be confident that throughout the entire life cycle of your pumps you can count on us to deliver precision and reliability.

Service Kits contain original spare parts such as O-Rings and shaft seals for particular Grundfos products. They are the fast and easy way to purchase and stock most necessary spare parts for standard Grundfos pumps, saving you a lot of time and effort in your maintenances.

Call for specific quotes.



Stack Kits



O-Rings



Seal Kits



Vertical Multistage Pumps



FEATURES

- Standard NEMA motor sizes
- Optionally available Low NPSH 1st stage impeller significantly reduces NPSH requirements.
- Low axial thrust impeller enables long motor bearing life
- Air vent in casing cover allows proper venting preventing air entrapment and dry run
- Fill port in casing cover allows for water fill, as well as installation of sensors, gauges, and other measuring devices
- Liner ring is a self-aligning, floating design constructed to prevent swelling at high temperatures
- Tungsten carbide lower pump bearings and sleeves are standard construction for all services, providing maximum operating life
- Direct drive pump and motor shafts are keyed for positive, reliable power transmission with no adjustments necessary
- “Flexible” floating outer casing allows for thermal expansion in hot water applications, preventing deformation due to pressure fluctuations
- Square-edge four spline shaft provides positive location and drive of impellers, eliminating wear
- Dimensions & flanges – installation is to market accepted dimensions for easy upgrade of existing installations
- Piping connection options include Fixed ANSI compatible flange, Oval flange, Loose ANSI compatible flange, victaulic, and clamp connections
- Mechanical seal – Silicon Carbide/Carbon/Viton mechanical shaft seal. Cartridge mechanical seal design enables plug in replacement without disassembling the motor bracket




Main product features

1  **Innovative hydraulic solutions**
Any motor, anywhere.

- The Shurrricane impeller reduces axial thrust load
- Long life of standard motor bearing

Shurrricane™ Patent application pending

2  **Motor flexibility**


- Standard NEMA motor sizes can be fitted with no modifications thanks to low axial thrust load.
- Allows a wider range of motors to be used.

3 **Piping connection options**

- Optional pipe connections are available depending on the application requirements
- Dimensions & flanges - installation is to market accepted dimensions for easy upgrade in existing installations

Material	Round flange ANSI Compatible	Loose Flange ANSI Compatible	Oval Flange	Plug-In connection (victaulic)
AISI304/ AISI316				

*EVMSUN Low NPSH only available with Round Flange as standard

4  **Shaft seal solutions**

- Shaft seal material:
 - B: Resin impregnated carbon graphite
 - Q: Sintered silicon carbide
 - Q_g: Silicon carbide with carbon graphite
- Carbon or graphite inclusions with silicon carbide can be used as reduce friction.
- Conforms to EN12756 (ex DIN 24960)

5  **Easy maintenance**

- The spacer coupling allows easy maintenance without having to remove heavy motors over 5 HP.
- The cartridge shaft seal enables replacement of the shaft seal without disassembling the motor bracket

6 **Smart plug solutions**

 Air ventilation plug	 Water filling & sensor plug	 Drain plug
---	--	--



METERING PUMPS




- The high turn-down ratio significantly reduces the number of different models required.
- All models have a universal mounting plate for all widespread mounting methods. The pump can quickly and easily be removed from the mounting plate.
- The control cube can be mounted facing left, right, or straight ahead. Maximum flexibility is further ensured by a wide range of adjustment options and supply voltages (100-240 V, 50/60 Hz), and a hydraulic connection kit. Optional E-box and CIU boxes enable SMART Digital pumps to be integrated – and even retrofitted – in common standard fieldbus networks.



DDI

- Flows from 0.10 to 39.6 gph
- Maximum pressure of 232 psi
- Viscosities up to 3,000 cps
- Turndown ratio up to 800:1

Flex-Pro A3 Peristaltic Pump



- Max feed rate
33.3 GPH / 2100.9 ML/Min
- Max pressure
125 PSI / 8.6 bar
- Variable speed brushless DC motor
- Washdown, NEMA 4X (IP66)
- Patented Tube Failure Detection
- Accuracy: +/-0.5%
- Repeatability: +/-0.5%
- Output adjustment: 1-100% in 0.1% increments

FlexFlo A1F Peristaltic Metering Pump

The Flexflow A1F peristaltic metering pump is designed for metering off-gassing chemicals, such as sodium hypochlorite and peracetic acid. The pump offers a smooth chemical feed without risk that it will overheat or lose its prime. Furthermore, the pumps do not require continuous maintenance and does not include any check valves that could potentially clog. A large turndown ratio (1,000:1) allows users to standardize on one pump for all chemical-feed applications. Feed rates up to 5.6 gal/h (21.19 L/h) and pressures up to 100 psi (6.89 bars) are achievable. Other features include a sealed weatherproof enclosure, a patented tube-failure-detection functionality, mounting brackets and a self-adjusting power supply.



Blue-White
Industries, Ltd.



Micro—Flo Sensor This innovative product is designed to be used with your metering pump to provide accurate flow measurements and Accumulated Flow Data. It displays how much chemical your metering pump is dispensing.

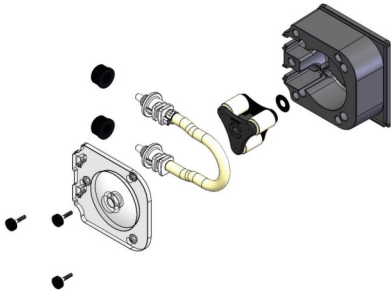
METERING PUMPS

Blue-White Flexflo Peristaltic Metering Pumps



KEY FEATURES

- Peristaltic pump design does not have valves that can clog requiring maintenance.
- Self priming even against maximum line pressure
- Outputs to 5.17 GPH (19.56 LPH)
- Output pressures to 100 psi
- Output volume is not effected by changes in back pressure.
- Patented pump tube design installs easily and stays centered on the rollers without manual adjustments.
- Two pump tubes supplied with each pump. No extra tubing required.
- Easy to use dial knob speed adjustment.
- Built-in Tube Failure Detection system. Senses chemical in the pump head, shuts off the pump and activates an NPN open collector output.
- Compatible with Blue-White's output flow verification sensor systems.
- Durable housing of chemical resistant Valox thermoplastic.



Spacer, back Part#90011-014

Roller Assembly complete (rotor) Part#71000-350

Tube Assembly, 3/8" OD tube compression

Part# A1-2T, A1-3T, A1-6T, A1-7T, A1-8T

Pump Head cover, polycarbonate Part#71000-156

Thumb Screw with key drive Part#90011-160

Tube nut, compression for 3/8" tubing Part#C-330-6

Blue-White Pump Tubes assembly and
Parts.



Blue-White
Industries, Ltd.

METERING PUMPS

W A L C H E M

IWAKI America Inc.

Pumps



The **EK Series** pump is the world's first and only IP67 rated electronic metering pump guaranteed to operate submerged 3 feet under water for up to 30 minutes! This makes the EK Series pumps ideal for wet or high humidity environments .

EKC36R1-VC 6.7 GPH @ 30 PSI

The **EHE Series** is the workhorse of the E-Class metering pumps. EHE Series pumps have outputs up to 20GHP and pressure capabilities to 150 PSI. Combining the EHE performance with a turndown ratio of 1800:1 yields one of the most versatile pumps in the treatment industry today.

EHE36E1-VEV 8.5 GPH @ 105 PSI



Manual Air Vent Valve PVC EPDM E90590



Walchem Injection Valve

INJECTION VALVE #E90006



Walchem Metering Pump Repair Kit Part#X11VC-PK



Walchem Tri-Purpose Valve

Valves are three valves in one.
Part #8011C

Yamada Air-Powered Double Diaphragm Pumps



Yamada's reputation for manufacturing top quality products, allied with continuing efforts in research and development, have created a strong foundation for market leadership. As an ISO 9001 certified corporation, stringent quality procedures are followed throughout the manufacturing process, including assembly procedures and product testing.

Grundfos Submersible Pumps



Grundfos submersible pumps represent advanced hydraulic design and offer high efficiency, high resistance to sand and other abrasives, motor burnout protection and easy maintenance. Made entirely of corrosion resistant stainless steel, Grundfos submersible pumps are ideal for applications including groundwater supply, irrigation, groundwater lowering and pressure boosting.



Water Treatment Controllers / Monitors Conductivity, pH/ORP, Disinfection, Free & Total Chlorine and PAA pH Monitor



Reliable, Flexible, Powerful

The W100 series provides an economical and reliable way to keep your water treatment program under control.

- Large display with icon-based programming makes setup easy
- Universal sensor input
- Multiple language support allows simple setup
- The third control relay allows the controller to be used in more places
- Optional analog (4-20 MA) output for recording, datalogging, proportional control
- Wall-mount package for easy installation
- Complete flexibility in the function of each relay

Intuition-6 Series
Conductivity, pH/ORP &
Disinfection, Free & Total
Chlorine, PAA

Key Benefits:

- Large touchscreen display with icon based programming makes setup easy
- Six relay control outputs
- Combination sensor input & analog input board that adds even more flexibility
- Lead/Lag control of relays
- Optional dual analog(4-20mA) input for fluorometers or nearly any other process value
- Economical wall-mount package for easy installation
- Email alarm messages, data-logs, graphs, or system summary reports
- Ethernet option for remote access via the internet, LAN, BACnet or Modbus/TCP



IWAKI America Inc.

HACH pH MONITOR & PARTS

Hach SC200 Universal Controller is the most versatile controller on the market. It allows the use of digital and analog sensors, either alone or in combination, to provide compatibility with the broadest range of sensors. Providing accurate pH readings, even in high Alkalinity water profiles.



LXV404.99.00502

SC200 Universal Controller 100-240 AC with one Digital Sensor input and two 4-20 MA outputs.

CPVC Union Mount for Hach pH Sensor

Part #6131300

DPD1P1—pH Sensor

The smart choice for accurate and reliable online process pH measurement. Exceptional process pH sensor performance with differential Electrode pH



Chlorine, Free

CAT. NO. 2231-02

Chlorine, Total (1 Drop = 1PPM)

CAT. NO. 2254-01

Chlorine, Total (1 Drop = 10 PPM)

CAT. NO. 24444-00

Wide Range Indicator pH (range 4-10)

CAT. NO. 1470-11

Alkalinity

CAT. NO. 24443-01

Hardness, Total

CAT. NO. 1454-01

Ammonia

CAT. NO. 2241-00

Hach drop count titration kits are a simple, easy and cost effective way to test for many common parameters, including chlorine, pH, Alkalinity, Hardness, Ammonia and more. Kits can be used in the field or lab for a quick reference, or simple yes / no confirmatory testing.



Q 46H Residual Chlorine Monitor

Provides easy online monitoring and control of Chlorination System. Monitors Free Chlorine levels from 0-200 ppm. The constant head flow cell ensures that a constant flow of water passes across the face of the sensor, helping provide reliable and accurate measurement readings.



ATI Air Monitor With Alarms

With changing OSHA air standards for work production areas, monitoring production air quality is more important than ever. The wall mounted unit includes Alarm and Lights that can be programmed to flash. Our ATI F12 Toxic Gas Detector is designed to measure toxic gases and oxygen in hazardous locations.



ATI Air Monitor Remote Sensor Assembly

The remote sensor option permits the sensor to be mounted up to 100' from the transmitter. Remote inter-connect cable sold separately.

Nema 4 Enclosure and Alarm Light

Provides safe environment for damp area.

Parts for Q46 Monitor

The basic sensing element used in the total chlorine monitor is a 3-electrode amperometric membrane sensor which measures chlorine directly. The chlorine measurement does not alter the sample or add any chemicals to the sample stream, so the water flow can return to the system if desired.



CL2 Probe Sensor

#00-0066



Free Chlorine Electrolyte 4oz.

#09-0011

Free CL2 Membranes 10pk

#05-0005

CL2 Flow Sensor Screw & O-Ring Kit

#05-0004



Flow Cell Assemble

#00-0043

Sensor Cable

#03-0029

O-Ring for Flow Cell

#42-0014



Cell Modems For Chlorine & pH Monitors

Cell Modems



The modemMillie industrial cellular modem keeps your chemical feed and control equipment connected to the Internet 24/7 with its own cyber-secure connection. Using DirectConnect and the latest cellular & LAN routing technology, modemMillie provides ANY Ethernet-ready equipment with its own secure connection. The complete modemMillie line of industrial cellular modems is designed to bring reliability and simplicity to water quality monitoring. These fully-featured communication devices provide you with complete remote monitoring and control of your internet-enable feed and control equipment. Receive alarms, emails and upload data from anywhere internet service is available. The integrated WiFi provides local wireless access to the feed and control equipment and serves as an internet hot spot allowing you to use your phone or laptop to access your online service reporting tools, email and documentation on-site. Data plans are also available to pair with your systems.

pH Buffer Solutions—Myron Buffers



Traceable to NIST certified pH references and color-coded for instant identification. These 4, 7 and 10 pH Buffer Solutions are mold inhibited and accurate to within +0.01 pH units @ 25 C. Sold in 32 oz. bottles.

- Myron pH Calibrating Buffer Solution pH 4.00 #PH04
- Myron pH Calibrating Buffer Solution pH 7.00 #PH07
- Myron pH Calibrating Buffer Solution pH 10 #pH10

Air Valves



Size 6" to 12"
Valve Type: Air Valve
Fluid: Water

Figure 960-D and 960-U Combination Air Valves are “triple function” valves. They vent air from pipelines and systems as they are being filled with water and then closed tight once the system is full and pressurized. They also release air that accumulates in the valve while the system is operational. They automatically open to admit air to limit vacuum formation when the pipeline or system is drained and or a negative pressure occurs in the valve.

The Figure 960 utilizes a bolt-on air release chamber and has the same performance as the dual body Figure 950 but is somewhat more compact. The Figure 960 Combination Air Valves are typically installed at high points in the system where air naturally rises during filling and in operation and vacuum first forms during draining.



Combination Air Valve for Sewage, Single Body Durovent All SS

VAG GA Industries Figure 942SS Durovent Combination Air Valves automatically and efficiently vent air during filling, release air and gas that have collected in the valve while under pressure and in operation and open to admit air during pipeline draining.

Whether due to the fluid itself or ambient conditions. Durovent Wastewater Air Release Valves provide the ultimate in corrosion resistance since the body cover float, internal linkage, external fasteners and pipe plugs are all made from Type 316 stainless steel. The valves also employ a specially designed elongated body to maintain the solids bearing fluid far enough below the internal mechanism to minimize clogging and maintenance.

Non-Shock Working Water Pressure at up to 150F (66C)						
	Valve Only			Valve and Backflush Attachments		
Figure Numbers	942SS			942SSF		
Valve Size	2" x 1"	2"	3" x 2"	2" x 1"	2"	3" x 2"
Inlet Size	2" NPT	2" NPT	3" NPT	2" NPT	2" NPT	3" NPT
Outlet Size	1" NPT	2" NPT	2" NPT	1" NPT	2" NPT	2" NPT
Working Pressure	10-150 PSI			10-150 PSI		
Pressure Rating	200 PSI			200 PSI		
Hydro Test	300 PSI			300 PSI		

Pressure Relief Valve



Pressure Release Valve—These Plast-o-matic valves relieve excess/ dangerous pressure from closed-top vessels or piping systems. A self contained mechanized device that requires no accessory items for their operation. Offered in PVC for durability and corrosion resistance.

1/2 inch	Part #RVT050
3/4 inch	Part #RVT075
1 inch	Part #RVT100
1 1/2 inch	Part #RVT150
2 inch	Part #RVT200

Hayward EATB Series Electric Actuated Ball Valve



EATB Series is a package unit of an EA actuator and a TB series ball valve. The EA actuator is a 115 VAR full featured electric actuator with a TB Series PVC Ball Valve and EPDM O-rings. Socket and threaded end connections come with the valve. Sizes from 1/2 inch to 2 inches.

Part #

EATB1100STE 1" PVC Actuated Ball Valve

EATB1150STE 1 1/2" PVC Actuated Ball Valve

EATB2200STE 2" PVC Actuated Ball Valve

Spears Actuators Valve



Butterfly Valves

- PVC, CPVC, PVDF, and PP Bodies
- PVC, CPVC, PVDF, and PP disc
- Sizes 1-1/2" - 24"
- Liners in EPDM, FPM, and Nitrile
- Wafer or lug style
- Lever handle up to 8"
- Gear operator 8" and above
- Stem extensions
- Electric and Pneumatic actuators



Ball Valves True Union

- PVC, CPVC, Polypropylene, and PVDF
- Sizes 1/4" - 6"
- Seals in EPDM or FPM
- Teflon Seats
- Socket, Threaded, or Flanged
- Lockouts available
- Electric or Pneumatic actuation options available



Spears PCD/PCS Series Actuators

KEY FEATURES

- For All Sizes of Ball and Butterfly Valves
- Four-Piston Rack and Pinion Design
- Compact, Lightweight Design
- Position Indicator
- Nema-Four Style Solenoid Mounting
- Adjustable Travel Stops

Sizes 1/2" - 2" on the preassembled ones, up to 6" on the Actuated.

Rod Guided Flow Meters

Rod Guided Flow meters for simple visual flow conformation. This rod guided flow meter is perfect for a variety of applications. The polysulfone meter body resist high temperatures and pressures. Adaptors and unions engineered for increased protection from misalignments and vibrations.



Pipe Size	Dual Scale Range		Float Material	Model Number
	GPM	LPM		
1"	.5 to 6	2 to 22	Teflon	F-451006LHN
1 1/2"	.5 to 6	2 to 22	Teflon	F-451006LHN-24
1"	1.0 to 10	4 to 40	316 SS	F-451001LHN
1 1/2"	1.0 to 10	4 to 40	316 SS	F-451001LHN-24
1"	2.0 to 20	7.5 to 75	316 SS	F-451002LHN
1 1/2"	2.0 to 20	7.5 to 75	316 SS	F-451002LHN-24
1"	3.0 to 30	12 to 115	316 SS	F-451003LHN
1 1/2"	3.0 to 30	12 to 115	316 SS	F-451003LHN-24
1"	4.0 TO 40	15 to 155	316 SS	F-451004LHN
1 1/2"	4.0 to 40	15 to 155	316 SS	F-451004LHN-24

2" Pipe Size

MODEL NUMBER	Dual Scale Range		Float Material	Guide Rod Material
	GPM	LPM		
F-452020LHN	2 to 20	8 to 78	Teflon	316 SS
F-452060LHN	6 to 60	30 to 230	316 SS	316 SS
F-452080LHN	8 to 80	40 to 300	316 SS	316 SS
F-452100LHN	6 to 100	20 to 380	316 SS	316 SS
F-452130LHN	20 to 130	80 to 500	316 SS	316 SS
F-452175LHN	25 to 175	100 to 675	316 SS	316 SS

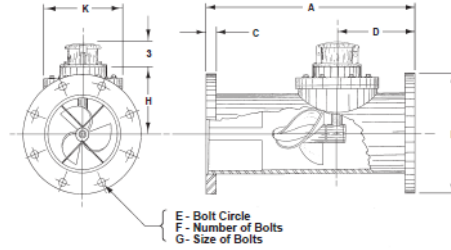


F-44750L-12 0-10 Flow Meter
.75" M/NPT INLINE



Impeller—Flow Meter

150 psi Flanged Tube Meter
 Sealed Meter Mechanism—Magnetic Drive
 Sealed Totalizer
 Sizes 2” thru 48”



Model ML03 Flanged Tube Meters are manufactured to the highest standards. Materials used on all meters and flow ranges for the low velocity meter meet or exceed AWWA standard C704-02. The flanged end tube design permits use in a wide range of applications with up to 150 psi working pressure.



ModMAG



Badger Meter

M2000 Electromagnetic Flow Meter

Combining a general-purpose detector with an amplifier, the ModMAG M2000 Electromagnetic flow meter features an advanced, user-friendly design that is built for field verification testing with the use of a simple, handheld device.

Plast-O-Matic PAA Solenoid Valve



Series PS Pilot operated Solenoid Valve
Inlet rating 140 psi, back pressure rating to 70 PSI, with
minimum 5 PSI differential required.

Features:

- Normally closed, in-line design with bubble-tight shut-off.
- Minimum 5 PSI differential required.
- High pressure: Particularly for applications where hogback-pressures (up to 70 PSI) are required e.g. controlling flow spray nozzles, high pressure chemical injections. (Inlet pressure to 140 PSI)
- High flow rates—Cv's from 5.2 on the 1/2" size to 80 on the 3" size.
- Tested to over 1,000,000 cycles in laboratory conditions, with water.
- Versatility: Can be used with all types of solutions including acids, caustics, solvents and chlorine solutions.
- Rugged thermoplastic construction is resistant to both internal and atmospheric corrosion. No metal parts in wetted areas.
- Sizes: 1/2", 3/4", 1", 1 1/2", 2 and 3".

Asco Solenoid Valve Series 221 Slow Closing

Solenoid Valves

ASCO[®]



Stop Water
Hammer

Pilot operated, normally open or normally closed. Snubber slows disc closing speed to protect system against water hammer damage more effectively than other techniques. Pressure spike due to water hammer is reduced to a point, eliminating the need for suppressors or other controls in most water systems.









SOLENOID VALVES

Asco NPT, 120 Volt, normally closed, brass body solenoid valve for water service with a maximum temperature of 180 F and a maximum pressure of 150 psi.

2"	8210G100
1 1/2"	8210G022
1 1/4"	8210G008
1"	8210G004
3/4"	8210G009
1/2"	8210G015



ASCO[®]

SIZE		1/2"	3/4"	1"	1 1/4"	1 1/2"	2"	3"	4"	6"
	Comp Ball Valve S x S	050	075	100	125	150	200	300	400	600
	True Union Ball Valve S x S TB1??? STE	050	075	100	125	150	200	300	400	600
	True Union Ball Check Valve S	050	075	100	125	150	200	300	400	600
	Gate Valve S x S 2012-???	050	075	100	125	150	200	300	400	600
	Comp Ball Valve S x S CPXF-01???GS	050	075	100	125	150	200	300	400	600
	True Union Ball Valve S x S TB1??? STE	050	075	100	125	150	200	300	400	600
	True Union Ball Check Valve S x S TC10???	050	075	100	125	150	200	300	400	600
	Gate Valve S x S 2012-???	050	075	100	125	150	200	300	400	600

Check Valves

True Union Ball Checks

- PVC, CPVC, PVDF, and PP
- Seals in EPDM or FPM
- Sizes 1/4" - 6"
- Horizontal or Vertical installation



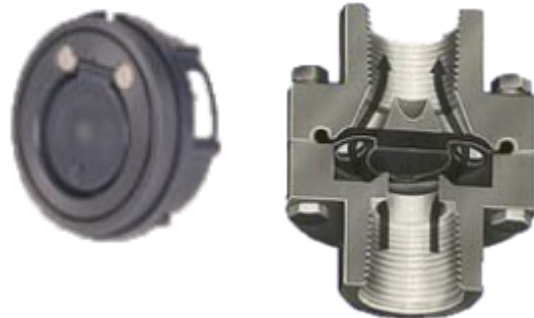
Swing Check

- Industrial, Utility, or Water style
- PVC, CPVC, PVDF, and PP
- Sizes 3/4" - 8"



Diaphragm Check

- PVC, CPVC, PVDF, and PP
- Sizes 1/2", 3/4" and 1"
- Normally closed
- Seals in EPDM and FPM



Y-Check

- PVC and CPVC
- Sizes 1/2" - 4"
- Seals FPM or EPDM
- True Union is available
- Spring Loaded Available
- Full flow design

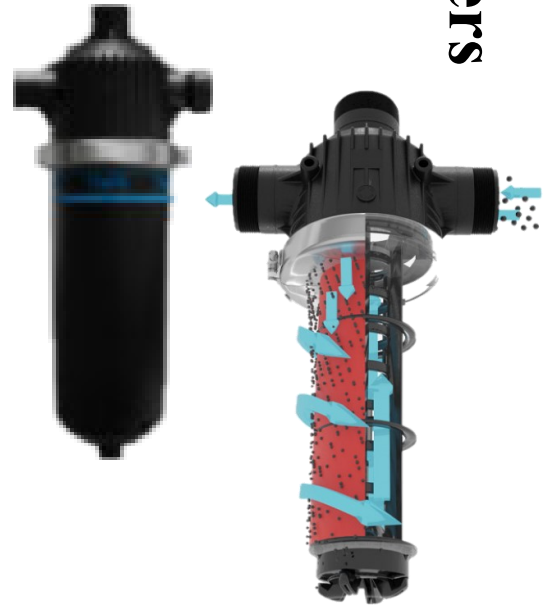


Helix HD Series Filters

Filters

UNIQUE FEATURES

- Centrifugal cleaning action minimizes maintenance
- Large disc surface area, with three-dimensional depth
- Particles can be flushed while filter is in operation
- Several color-coded disc options available
- Durable, corrosion-resistant, injection-molded housing
- Easily removable, quick clamp lid assembly



The Body

The body contains one inlet and two outlets, enabling the filter to be installed at either 90 or 180 degrees. A threaded cap is supplied with the filter to terminate the outlet port not being used. Inlet/outlet connections are available in NPT or Victaulic. The body contains inlet and outlet pressure gauge ports (gauges not included) for monitoring the pressure differential across the filter element which determines when the disc cartridge needs to be removed for maintenance.

The Lid

The lid is injection-molded, using an incredibly strong polyamide material. The centrifugal action, created by the Heliz-Element, spirals heavier particles flushing them either manually or automatically, from the 3/4" flush port at the lowest point in the lid.

The Closure

Manufactured in Type 316 Stainless steel, the quick-release clamp assembly is strong and reliable. No tools are necessary to remove the damp and filter cover when maintenance is required.

The Disc

The three-dimensional disc is ideal for filtering hard particles (such as sediment and scale) and soft fibrous material (such as algae, bugs, cottonwood seed, etc.). The color-coded discs are available in a variety of micron sizes.

Model#	GPM	Inlet outlet	Max Pressure	Connection Size	Dimensions
HD-25A	100	2" / NPT	125 PSI	3/4"	12 1/8"X28 3/4"X22 15/16"
HD-2NA	100	2" / NPT	125 PSI	3/4"	12 1/8"X24 1/8"X18"
HD-2SW	100	2"/Grooved	125 PSI	3/4"	12 1/8"X28 3/4"X22 15/16"
HD-2NW	100	2"/Grooved	125 PSI	3/4"	12 1/8"X24 1/8"X18"
HD-3NA	200	3" / NPT	125 PSI	3/4"	13 1/4"X30"X22 15/16"
HD-3NW	200	3"/Grooved	125 PSI	3/4"	13 1/4"X30"X22 15/16"

To Order

Call 770-922-5828 Fax 770-922-5587 Email: nancy@sesystemsinc.com

Page 30

Insta-Chlor Hand Held Sanitation Unit

Fast, Easy and Safe Sanitation for Hard Surfaces



It's here, the only smart hand held hard surface sanitizer where the user can dial-in the chlorine level that they desire for cleaning, sanitizing or disinfecting. Insta-Chlor is built for the job— it is heavy duty, using schedule 80 PVC that is ready for industrial use, but with a sleek ergonomic design for easy handling. It is powered by normal water pressure and delivers a range of applications form gentle sprays to jet streams of up to 40 feet. Insta-Chlor uses solid chlorine tablets, which provides erosion at predictable rates with highly accurate chlorine levels, eliminates premature dissolving, and eliminates the safety issues associated with liquid chlorine.

SES PRODUCTS

SES Manufactured Tank Level Switch

Unit is economical and makes adjusting tank water levels easy. Includes a timer adjustment switch for precise tank level control. SES can engineer a dual float level switch for your applications.



SES Millernator

In-Line Cal-Hypo Tablet Feeder. Can be used for line pressure up to 80 psi.





The SES Accu-Tab Cal-Hypo Tablet Delivery System is a cost effective, safe alternative to Chlorine Gas, Sodium Hypo, Chlorine Dioxide, and PAA.

Eliminate the worries of potential chemical leaks. Our Experienced Staff will engineer and customize the perfect Cal-Hypo Tablet System for your unique application.

Traditional markets served:

Municipal - Well water, Surface water, Wastewater, Booster Stations

Food Processing - Poultry, Red Meat, Fresh Cut, Pecans, Vegetable Wash, Irrigation, Frozen Foods

Beverage Plants– Soft Drinks, Bottled Water, Beer



The Accu-Tab system offers a safe and state-of-the-art approach to municipal water treatment for improved operational performance in your water treatment plant. The calcium hypochlorite technology of the Accu-Tab system is used worldwide and is certified or approved by **NSF, USDA, EPA, FDA and AWWA**. In addition to municipal water, Accu-Tab systems are used in applications for poultry plants, red meat processing, fruit and vegetable processing, beverage plants, irrigation and other specialized uses.

Accu-Tab Chlorinators

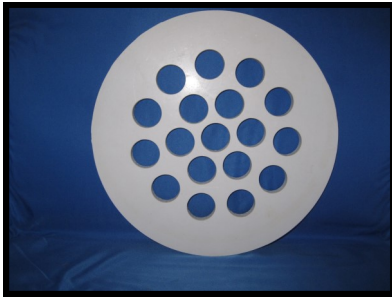
The complete NSF certified Accu-Tab System combines specially engineered chlorine feeders with quality controlled three inch Cal-Hypo tablets. Accu-Tab Chlorinators are solidly built. Each durable corrosion resistant chlorinator is hand crafted in the US using high quality PVC and is backed by a limited warranty.



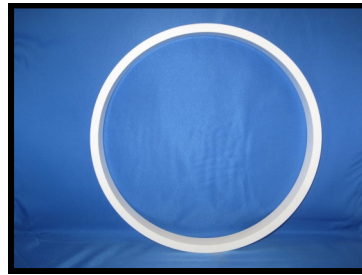
Model Number	Delivered per hour
3012	Up to .2 lbs / hour
3075	.2 to .7 lbs / hour
3150	7 to 2 lbs / hour
3530	2 to 4 lbs / hour
30600	4 to 8 lbs / hour
361000	8 to 13 lbs / hour



Accu-Tab system
PowerPro 3075
chlorination unit.



SIEVE PLATE



1" RING



LID FOR CHLORINATORS



Delivered on-site Chemicals

Accu-Tabs SI
Acid Rite Tablets
Citric Acid 50% FG
Db6 60% Solution
Granular Chlorine

Honey Well Chart Recorder

The DR 4300 10 inch Chart Recorder has bright digital displays with 2 channels. This configurable chart recorder adapts to a wide range of applications. Features universal inputs and built-in self test. The molded housing has a gasket door and acrylic window to meet NEMA 3 requirements; panel on surface mount.



Single Pen Model with Alarms

#DR4311-20E0-H0100-0000-0000-00-000-E0

Without Alarms

#DR4311-0000-H0100-0000-0000-00-000-E0

**Two Pen Model
With Alarms**

#DR4312-22EE-H0100-0000-0000-00-000-E0

Without Alarms

#DR4312-0000-H0100-0000-0000-00-000-E0

CHART RECORDER PAPER

0-100 Chart #24001660-001

0-14 Chart #24001660-036



Honeywell

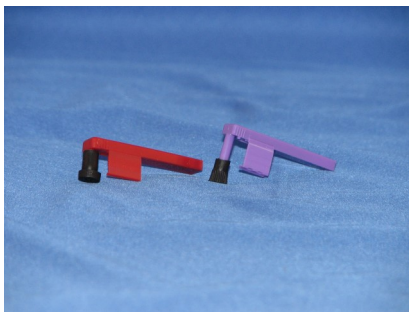


Chart Recorder Pen

Red Chart Recorder Pens #30735489-002

Purple Chart Recorder Pens #30735489-007

SES carries a full line of many hard to find and unique products such as:

- NEMA rated Enclosure Housing
- Electrical Control Panels, Switches, and Components
- Weld On PVC Glue & Primer
- Full Port Tank Drains
- Sch. 80 PVC Specialty Parts:
Bulkheads, caps, Tank Tite Springs
- Plastic Chemical & Water Storage Tanks
- All kinds of Check Valves
- Ask SES about Quantity discount.

**Give us a call for these hard to find items,
if we don't have them in stock, we will find
them!**



Accu-Tabs SI and Acid Rite Tablets!

www.sespumps.com



Nancy@sesystemsinc.com

P.O. Box 705 Conyers GA 30012

Tel 770.922.5828

Fax 770.922.5587

WWW.SESFOODSAFETY.COM

Volume 3